



Central Institute for Supervising and Testing in
Agriculture

PPP - Situation in the Czech Republic

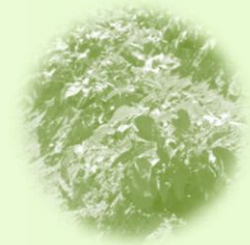
ISO 9001: 2015 certified

Pavel Minar
Czech Republic
www.ukzuz.cz



Content

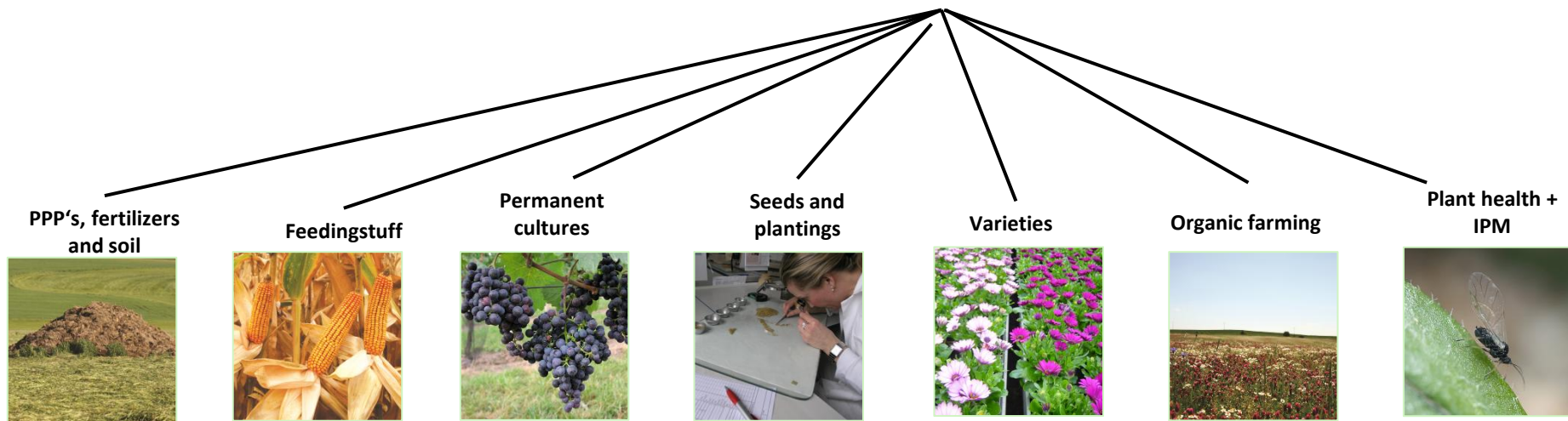
- **Regulatory authorities**
- **Staff and capacity**
- **Issues discussed**





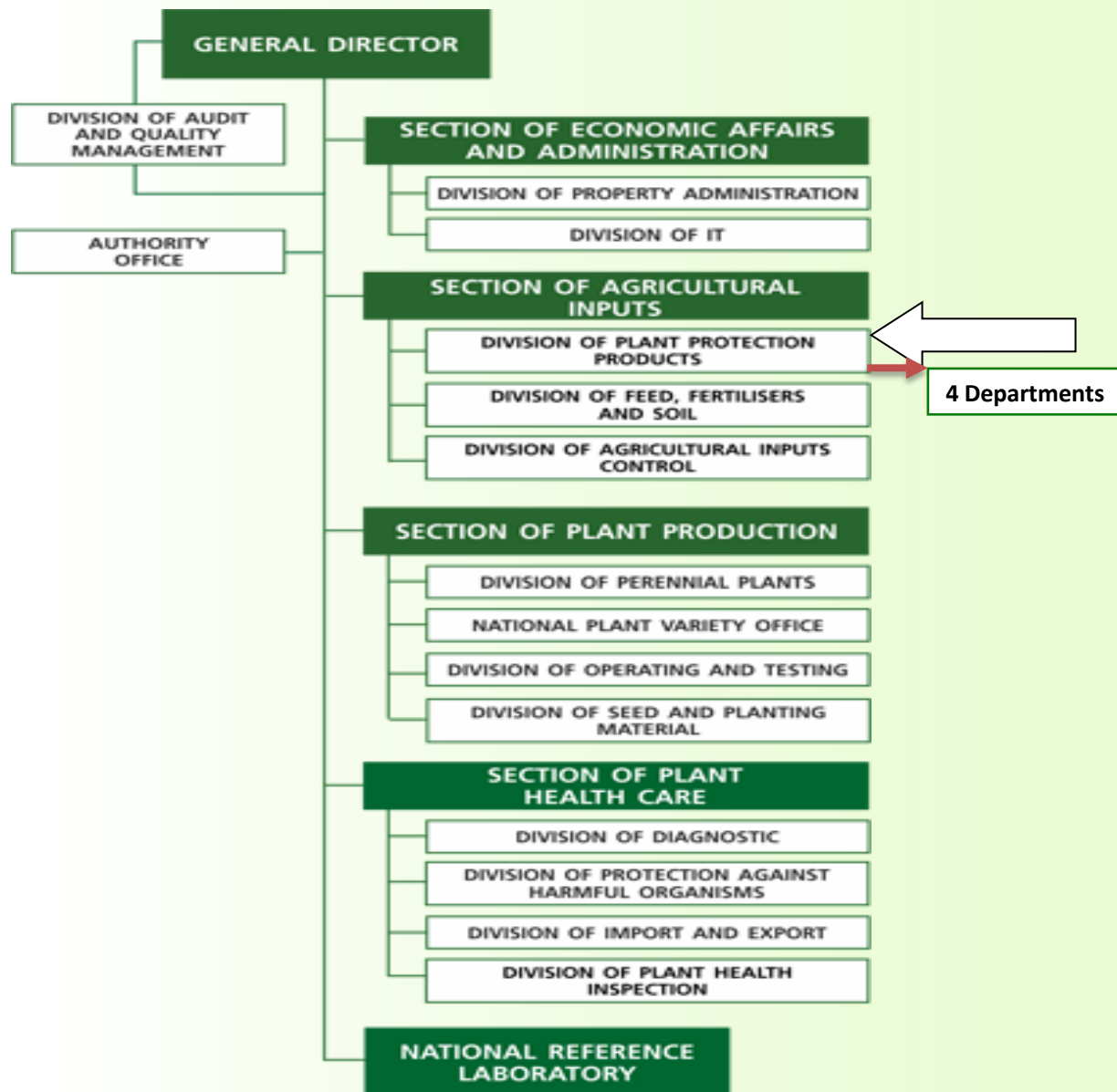
Central Institute for Supervising and Testing in Agriculture is the administrative authority subordinate to the Ministry of Agriculture of the Czech Republic

Holder of ISO 9001:2009 certificate for performance of state administration, official control and related testing in the area of plant production.





DIVISION OF AGRICULTURAL INPUTS





Areas of PPP activities

- Co-ordination of the process, completion of DAR, RAR, RR
- Granting authorisation certificates, GEP certificates
- Evaluation of biological efficacy
- Evaluation of phys.–chem. properties, identity, analytical methods
- Evaluation of fate and behaviour part
- Evaluation of ecotoxicology part
- List of authorised plant protection products (on-line)

Toxicology, operator exposure and residues evaluated by the Ministry of Health (State Health Institute) – PPP Communication Database



Capacity

PPP Division – 43 persons

- **Administrative staff + management – 8**
- **Co-ordinators – 14**
- **Efficacy – 6**
- **Ecotoxicology – 6**
- **Fate and behaviour – 5**
- **Chemistry – 4**



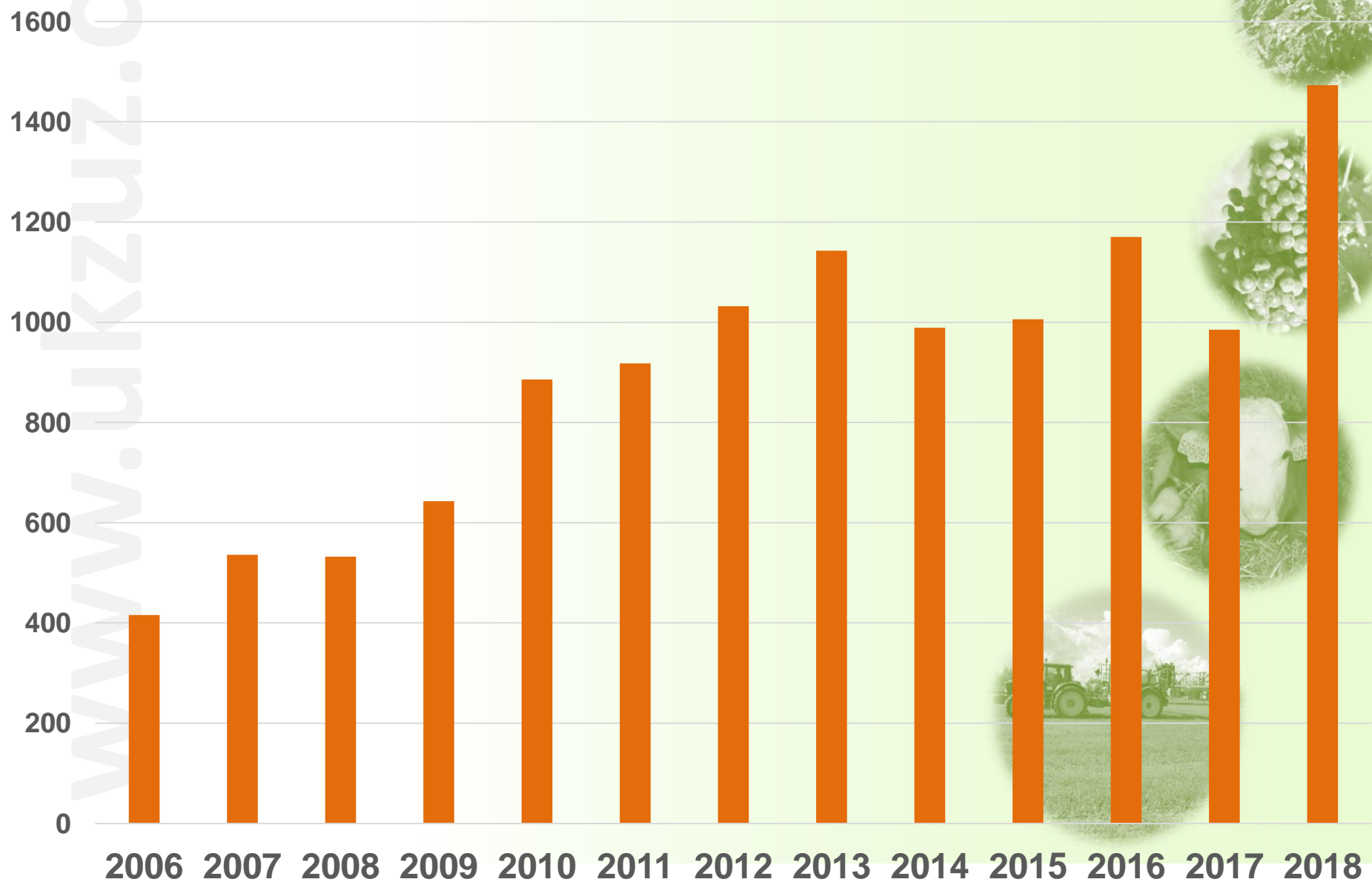
Capacity

NIPH – more than 20 experts

- **Toxicology**
- **Residues**
- **Operator exposure**



Number of applications for PPP authorisation in CZ



Number of applications 2018

ZRMS	New PPP	32
	Change of authorisation	27
CMS	New PPP	41
	Change of authorisation	126
Mutual recognition		33

Ministry x Regulatory agency

- Legal interpretations
- Policy issues
- Active ingredients
- Emergency measures



Active ingredients

- **Loss of „traditional“ substances**
- **Impact on crop protection technologies**
- **Profitability of some crops endangered**
- **Pressure towards emergency authorisations**



Risk mitigation measures

➤ **How to decide and communicate acceptable RMM**

➤ **Each RMM should be clearly defined and inspected**

➤ **Should be revised based on monitoring and inspection**



Thank you for your attention !

